

Southern Dutchess News

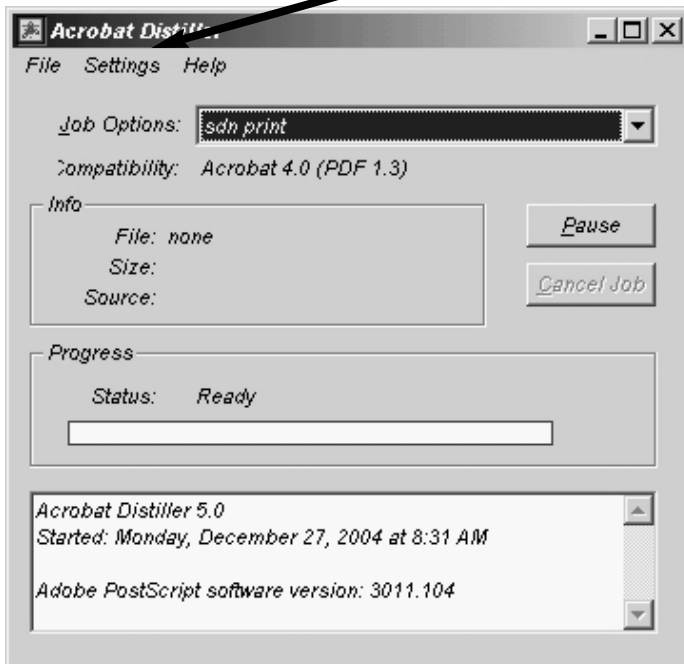
Adobe Acrobat Distiller Settings

Important Notes:

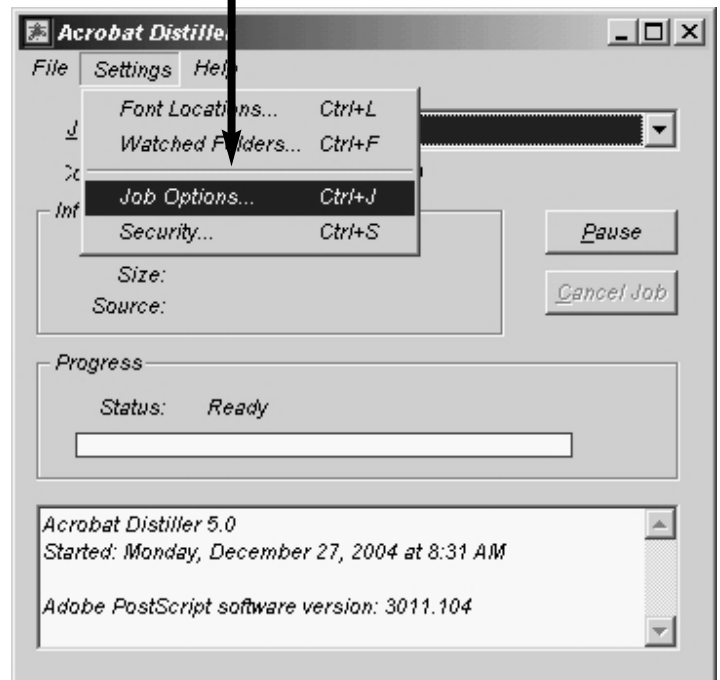
- A) Acrobat Distiller just distills the Post Script file into a “pdf” file that you can give to us to print out.
- B) This process assumes the “post script” file was made correctly for color CMYK or spot color output.
 - a) All black text is 100% black and no other color.
 - b) All color photos are already converted to CMYK, Black/White photos converted to GREY scale.
- C) Southern Dutchess wants you to be able to make a great “pdf” file for us to print from - so give us a call if we can further assist you. Call 845-297-3723 and ask for Roger our Production Director or Bob the Art Director

Follow these steps

- 1) If you have Acrobat Distiller as an independent program (separate from your page layout program), I prefer to launch it and change my settings here. **If not you need to go to settings from the print dialog box within your page layout program.** Either way we need to change the “Settings” tab.

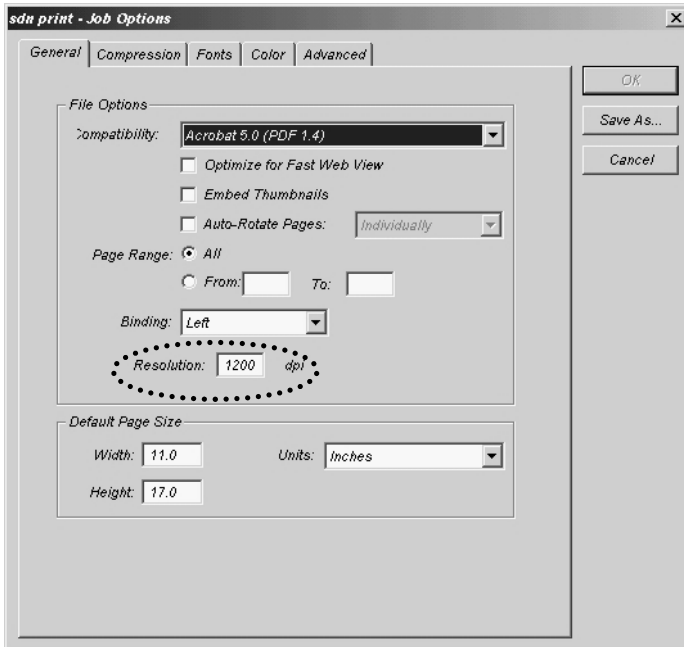


- 2) Select “Job Options”

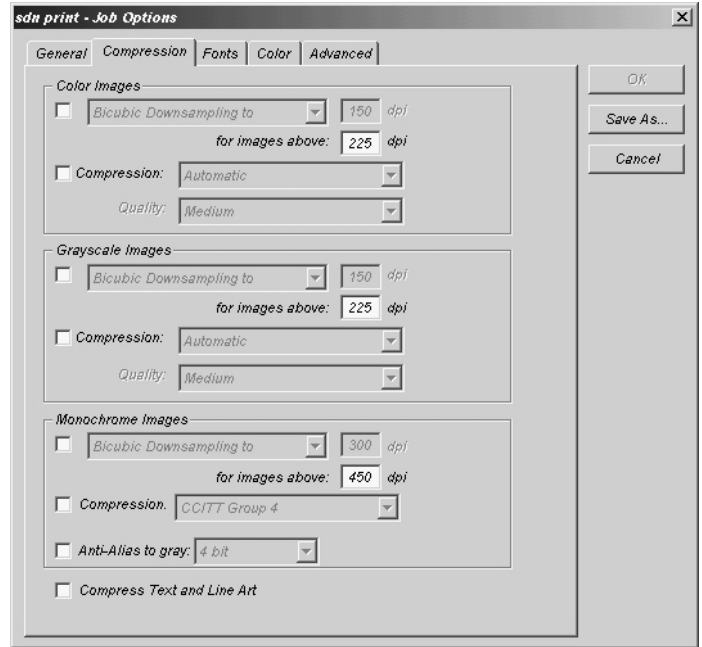


3) Match my settings as best you can, depending on your version of distiller. I have circled critical settings.

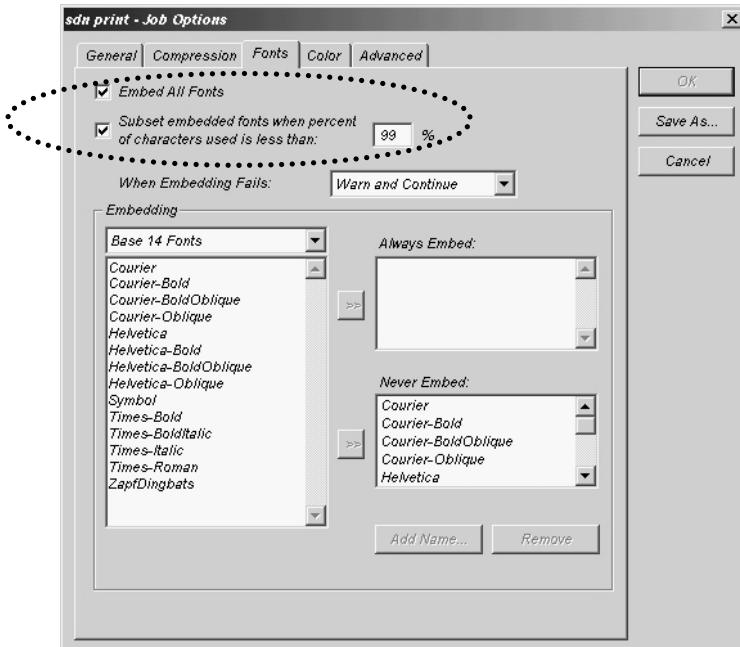
3a) General Tab - Resolution 1200



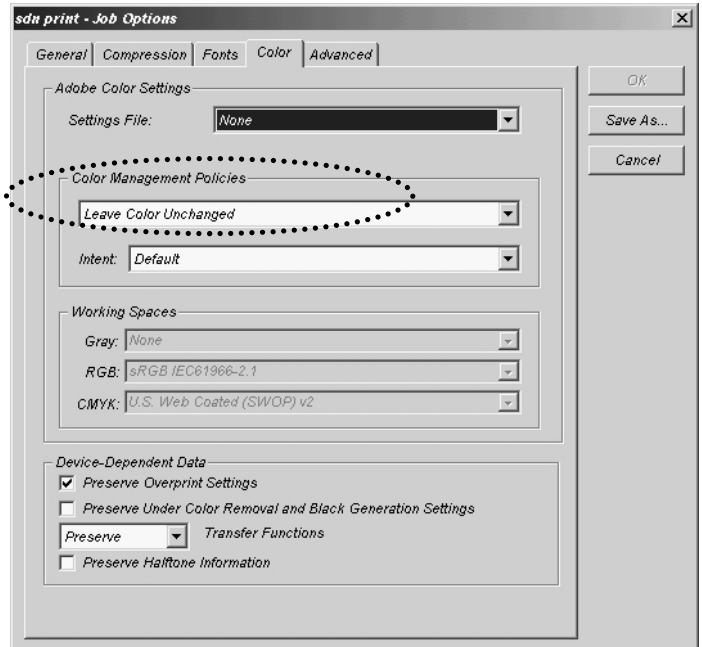
3b) Compression Tab - no compression. If your file is too big you may choose - Compression - Automatic - low to medium.



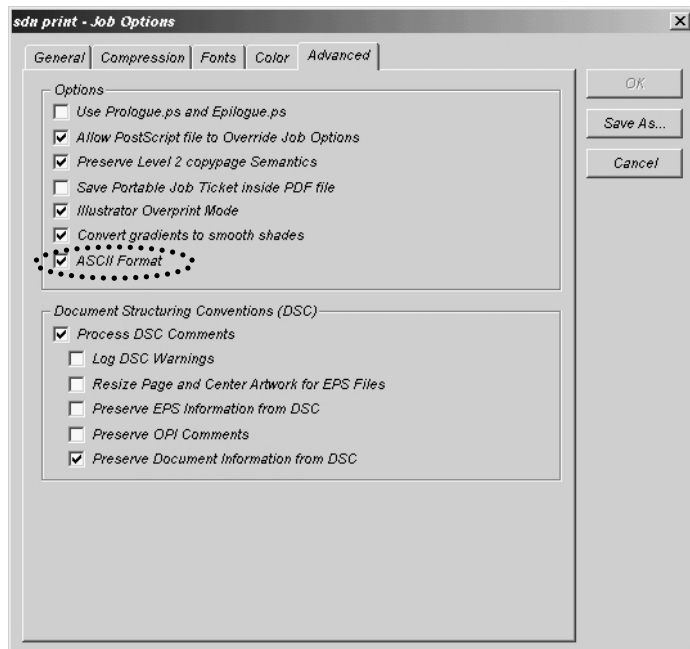
3c) Fonts Tab - Check "Embed All Fonts" and "Subset embedded fonts" 99%.



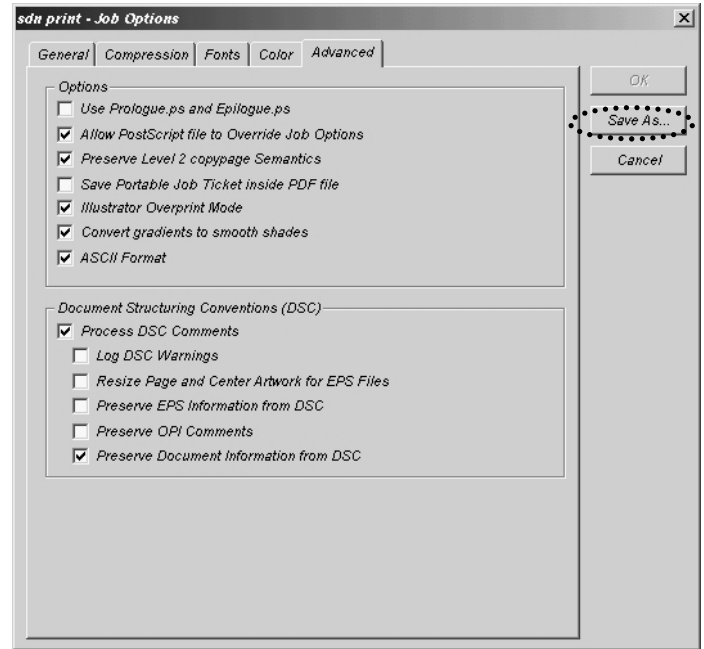
3d) Color Tab - "Leave Color Unchanged". This keeps your page layout settings intact.



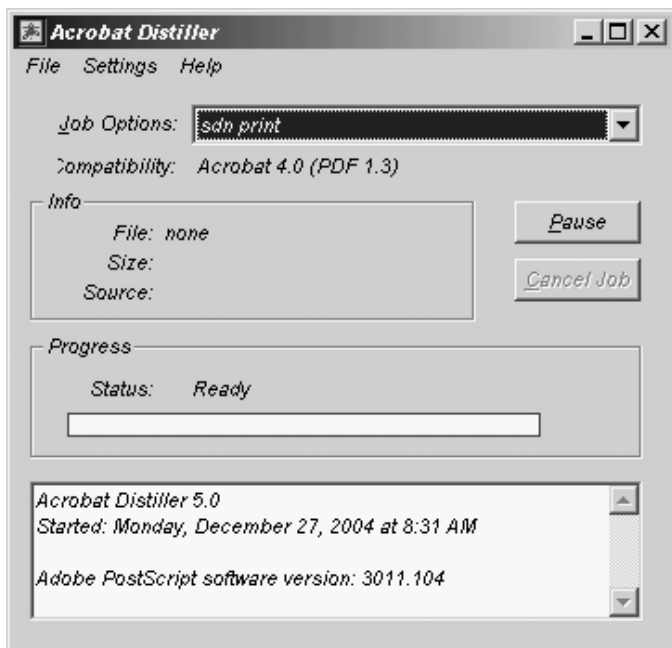
3f) Advanced Tab - Check "ASCII Format"



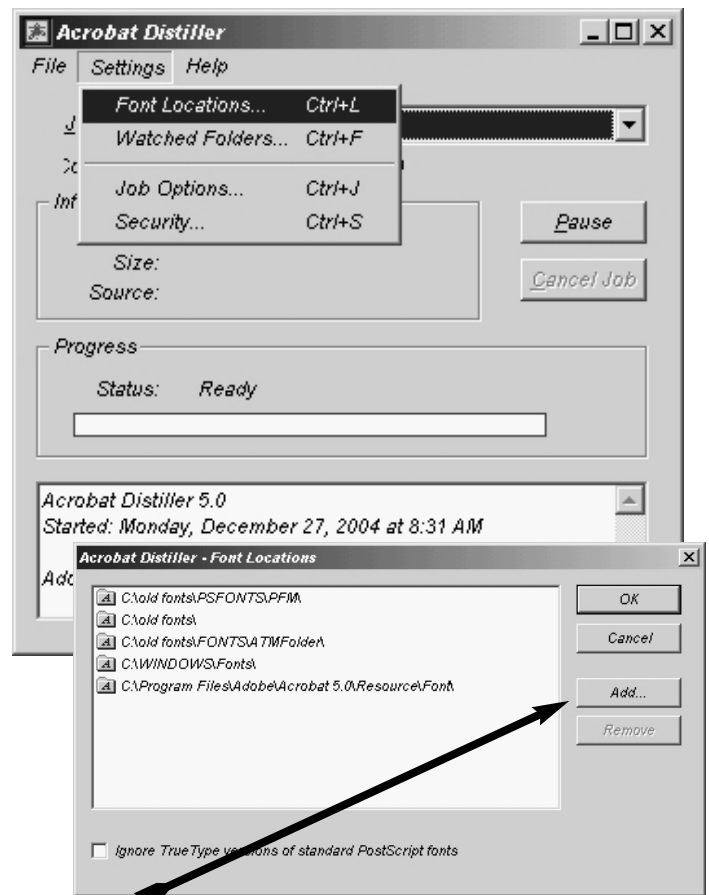
4) Save Settings - click on "Save As.." and save your settings. Always use these settings when creating a "pdf" file for us.



5) Drag your "post script" files to this window to create your "pdf" file. Watch for error messages in the bottom of this box, usually font problems.



Missing Fonts do not embed! If your fonts are not embedding go to "font Locations" and make sure the location of your fonts are listed.



"Add" font location if necessary